

NEW RELEASE!

glass
outlet

KINGSPLUM SLIDING RAIL SYSTEM

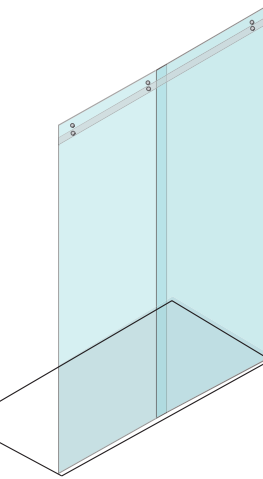
IDEAL FOR WIDE OPENINGS



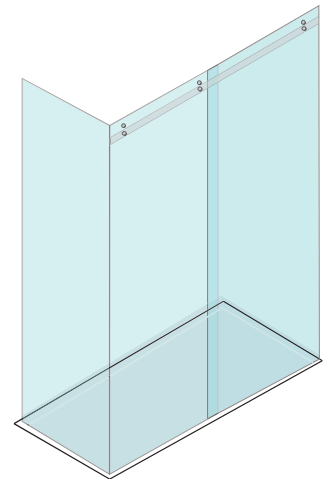
Kingsplum range is a beautiful, frameless sliding shower screen system designed to stand out from the rest, with only the best fittings used.

The kingsplum system can be used in both inline and 90 degree applications.

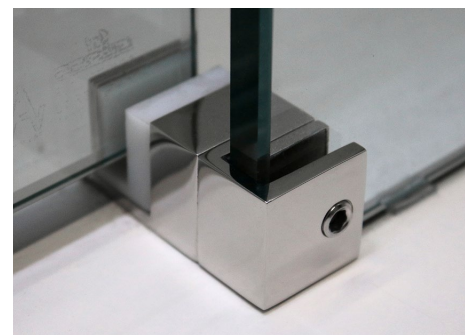
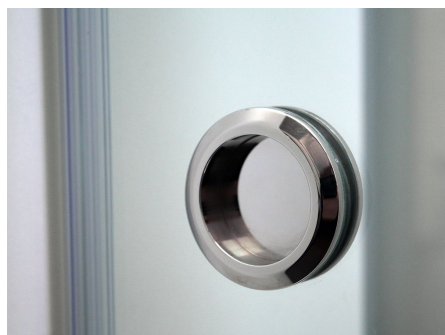
Achieve any installation size between 1200 to 1940mm wide with modular panels or custom made glass.



INLINE APPLICATION



90 DEGREE CORNER APPLICATION



AVAILABLE RANGE

KINGSPLUM KIT POLISH FINISH

Kit Includes:

- 2 x Door Upper Rollers; 2 x Door Stabiliser Guides;
- 2 x Fixed Panel Rail Connectors;
- 2 x Stoppers; 1 x Recessed Round Handle;
- 1 x Floor Guide; 2 x Rail Wall Brackets; x 3 Hex/Allen Keys



1x Recessed Round Handle



2x Door upper rollers



2x Door stabiliser guides
Offset screws allow height adjustment of guides



2x Fixed panel rail connectors



2x Stoppers

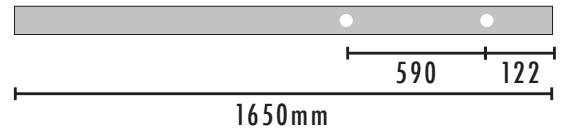
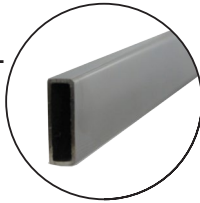


1x Floor guide

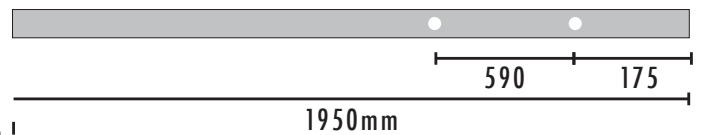


2 x Rail wall brackets

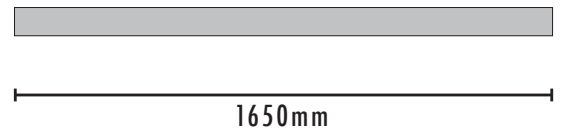
PRE-DRILLED RAIL POLISH FINISH



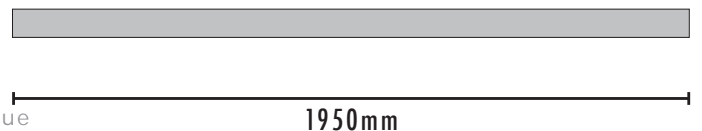
Rail dimensions: 30mm high x 10mm wide
Rail is pre-drilled ready to install with modular panels. The pre-drilled holes align with the 4 x modular glass fixed panel holes.
Simply cut down rail ends to desired overall width and install rail & glass panels.



BLANK RAIL POLISH FINISH



Rail dimensions: 30mm high x 10mm wide
Stainless rails also available WITH NO drill holes.
Custom drilling of rail holes enables flexibility for unique install situations where predrilled rails do not suit.
(Also enables drilling for configurations such as PANEL>DOOR>PANEL)



OPTIONAL EXTRA COMPONENTS

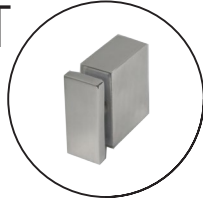
90 DEGREE BRACKET

POLISH FINISH KPHW

SKU:KPHW031

Required when installing with a glass return panel

(2 x modular glass return panels available or custom make glass as needed)

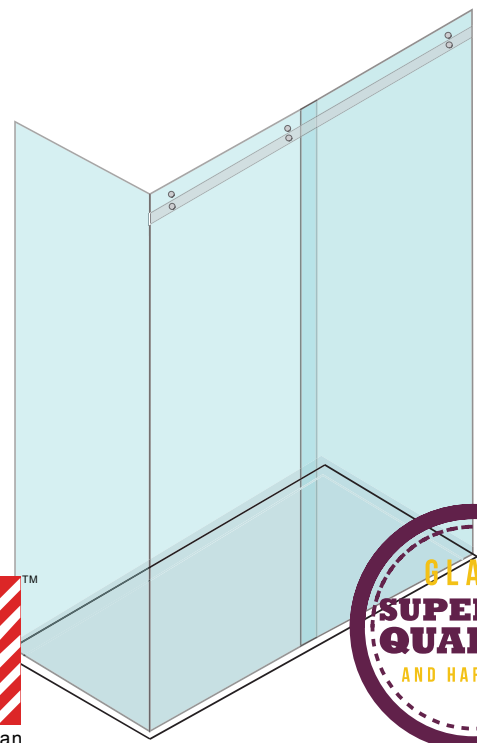
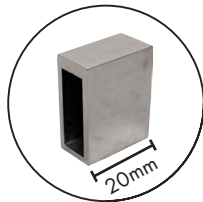


SLIMLINE RAIL WALL BRACKET

POLISH FINISH

SKU:KPHW014

Only required if using a 650mm wide modular fixed panel



90 DEGREE CORNER APPLICATION

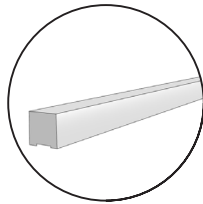
WATER BAR

POLISHED ALUMINIUM

SKU:KPbar1450

Silicon to floor in front of door

Dimension: 10mm H x 10mm W

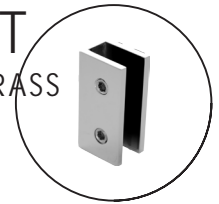


WALL BRACKET

CHROME PLATED SOLID BRASS

SKU:KPHW013

Wall bracket - Use to install fixed glass panels to wall



RAIL CONNECTOR

POLISH FINISH

SKU:KPHW009

Can be used for extra fixings to stainless steel rail. Example: If fabricating a 3 panel set up

FIXED PANEL > DOOR > FIXED PANEL

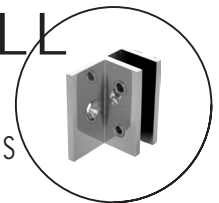


OFFSET WALL BRACKET

CHROME PLATED SOLID BRASS

SKU:KPHW030

Offset wall bracket - Use to install fixed glass panels to wall



DOOR BUMPER STOPPER

PVC - 2130MM LONG

SKU:KPstopper01

Suits 10mm glass

Affix to door panel as safety pre-caution to prevent accidental contact with wall.

10mm Bulb



WATER SEAL

PVC - 2130MM LONG

SKU:KPHW2130

Suits 10mm glass

Flexible PVC 26mm long

Affix to fixed panel

